

May 13th, 2023

#GlobalAzureAthens



Dear Global Azure
Athens 2023 sponsors,
your support made all
the difference — **thank
you!**



#GlobalAzureAthens



Microsoft

InfoQuest
TECHNOLOGIES



BlueStream
SOLUTIONS



Code.Hub

SIGNAL™

#GlobalAzureAthens

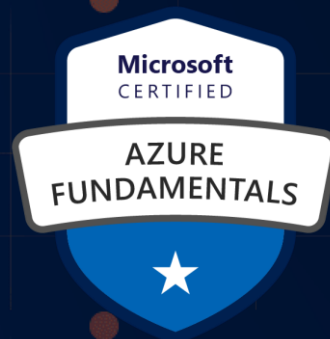
Reports Consumption Insights Using Azure Synapse & Power BI Rest Api

Dimitris Papadoulis – Panos Pateas

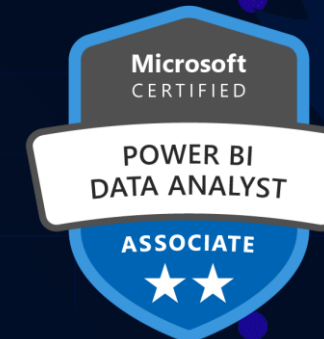
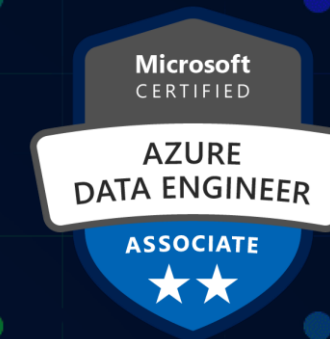
Who We Are



Dimitris Papadoulis
Data & BI - MVP Nominee



Panos Pateas
Data Engineer & BI

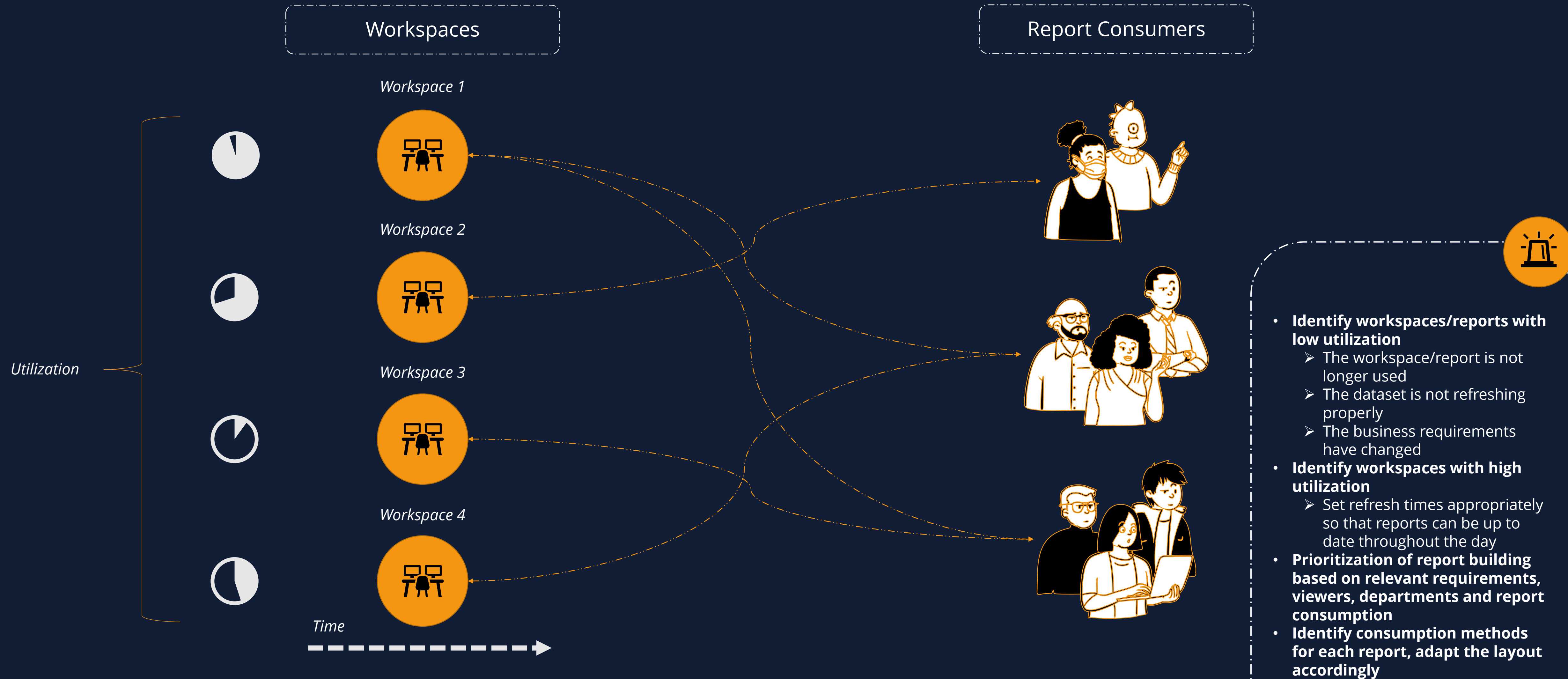


Agenda

- The Business Problem
- Our Approach (Synapse Architecture)
- Resources Overview
- Further Enhancements



The Business Problem



#GlobalAzureAthens

Our Approach



#GlobalAzure

Overview of Synapse Analytics & Power BI Rest Api



Azure Synapse Analytics

- Data Warehousing & Big Data Analytics
- Data Lake Gen2 as Storage Account
- Serverless/Dedicated Resources
- ETL/ELT
- Integration with other Azure Services



Power BI Rest Api



- Manage Power BI Content
- Perform Admin Operations
- Embed Power BI Content

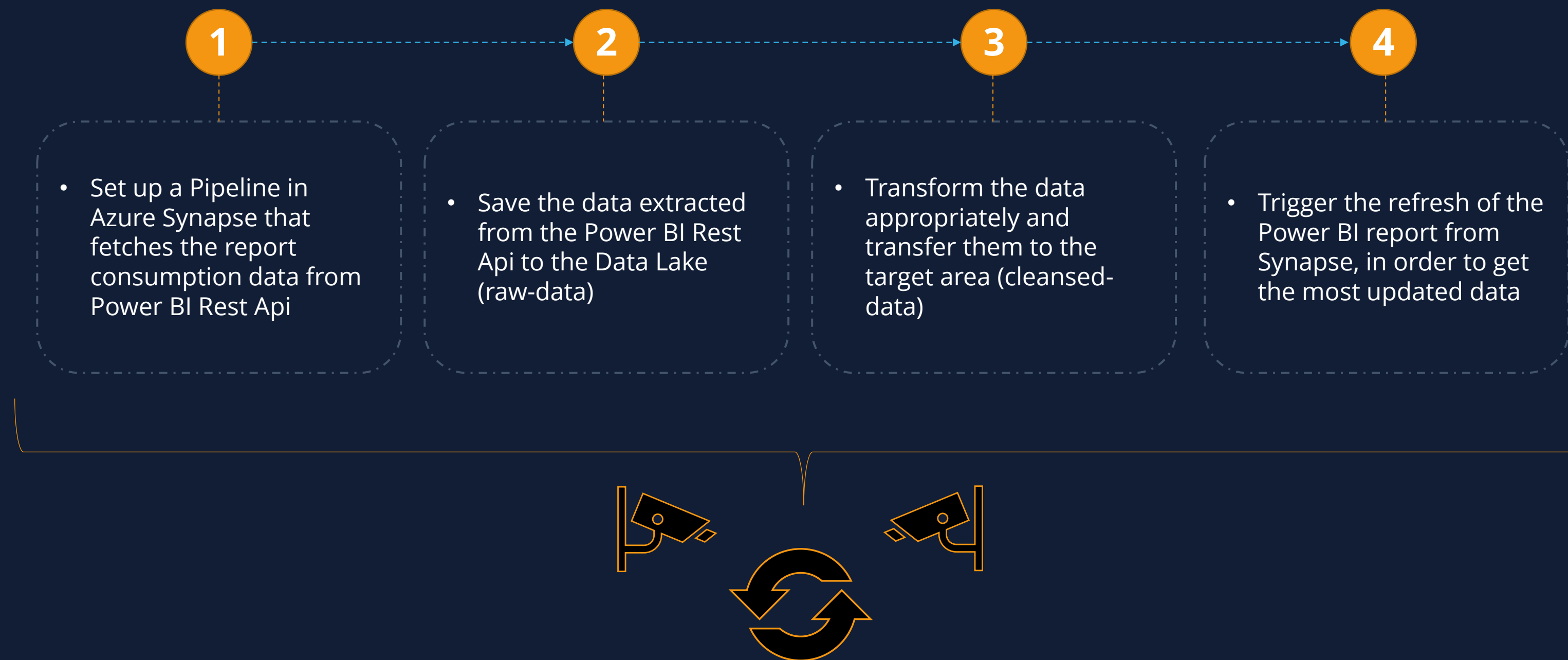


Dev / Test (Branches)

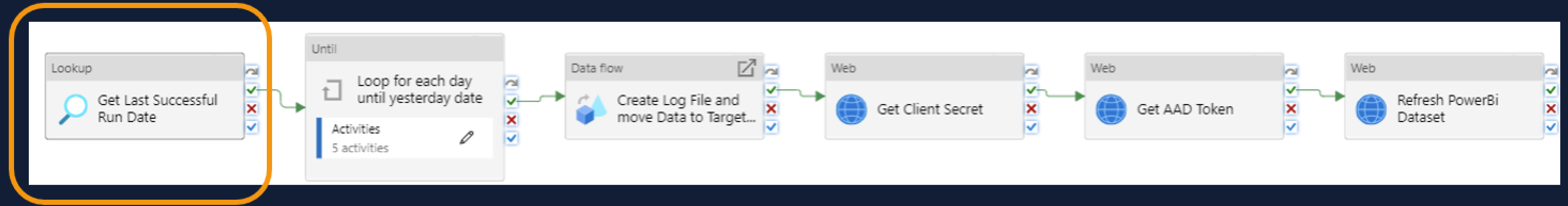


Deploy

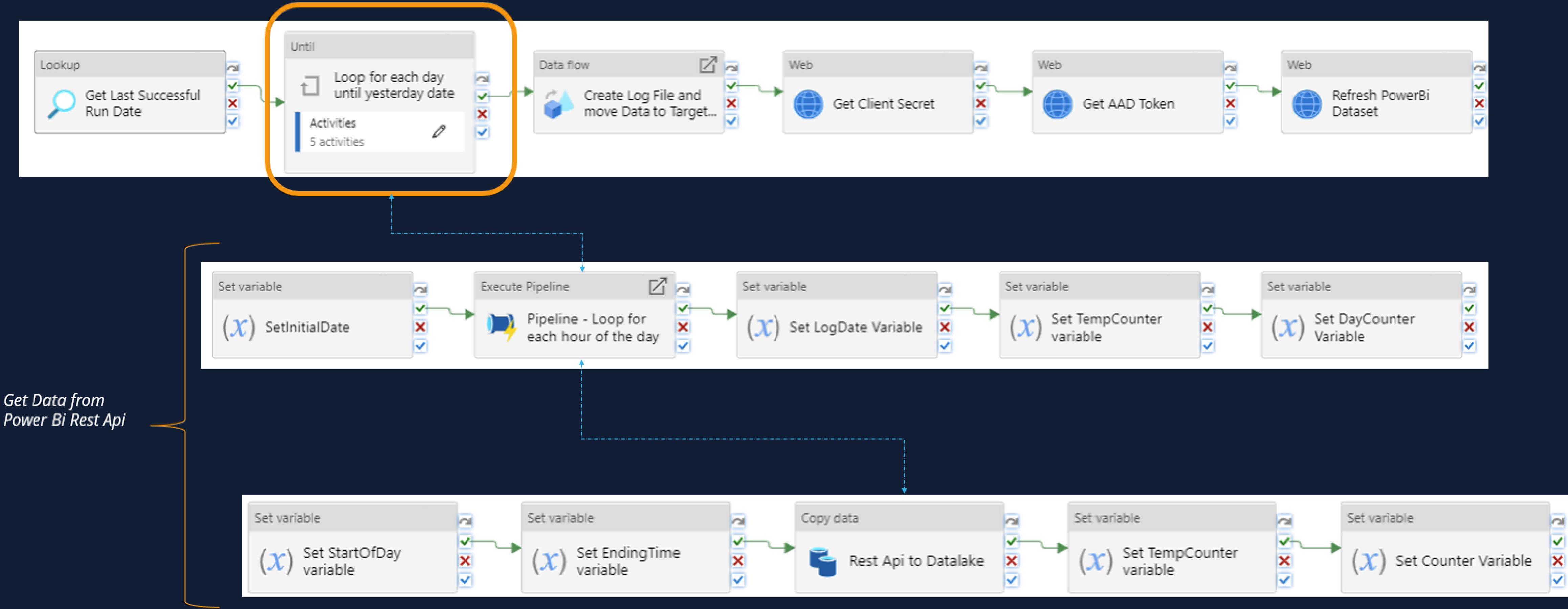
Architecture – High Level



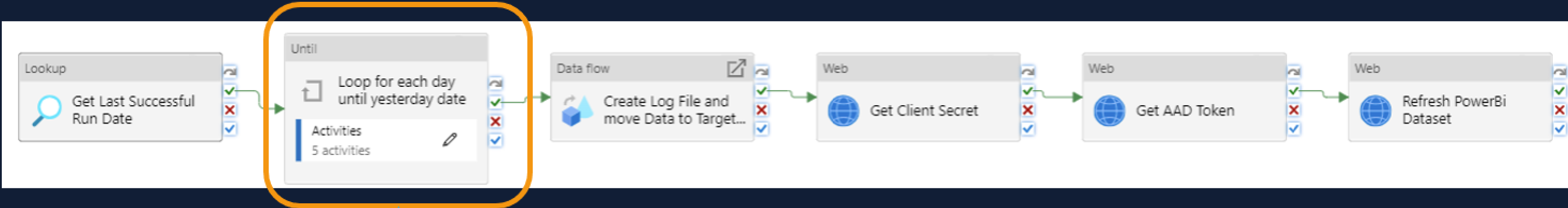
Architecture – Deep Dive



Architecture – Deep Dive



Architecture – Deep Dive



HTTP

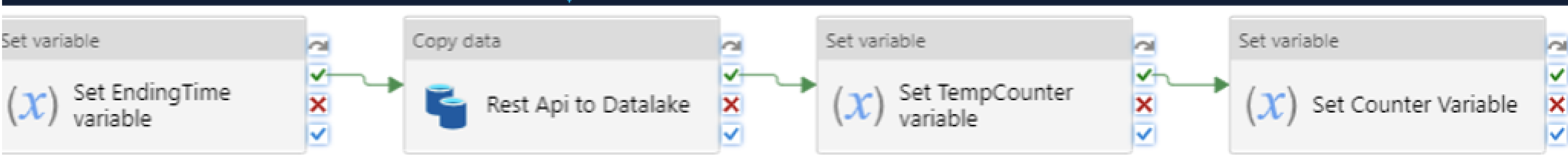
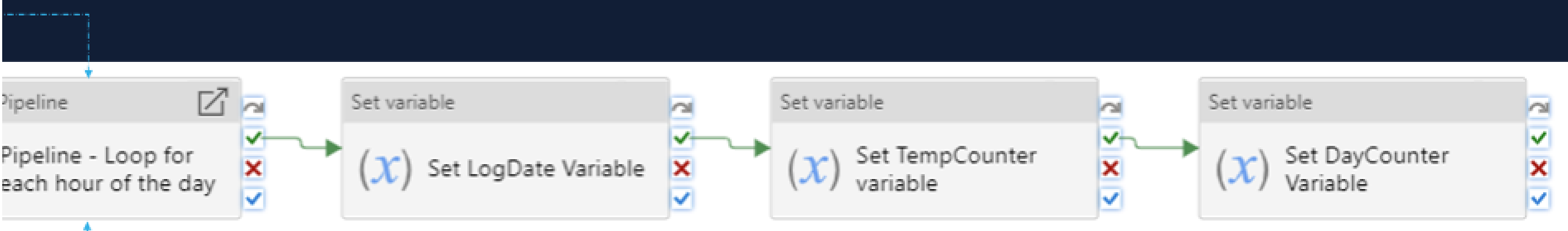
GET https://api.powerbi.com/v1.0/myorg/admin/activityevents?startDateTime='2019-08-13T07:55:00.000Z'&endDateTime='2019-08-13T08:55:00.000Z'&\$filter=Activity eq 'ViewReport'

Sample Response

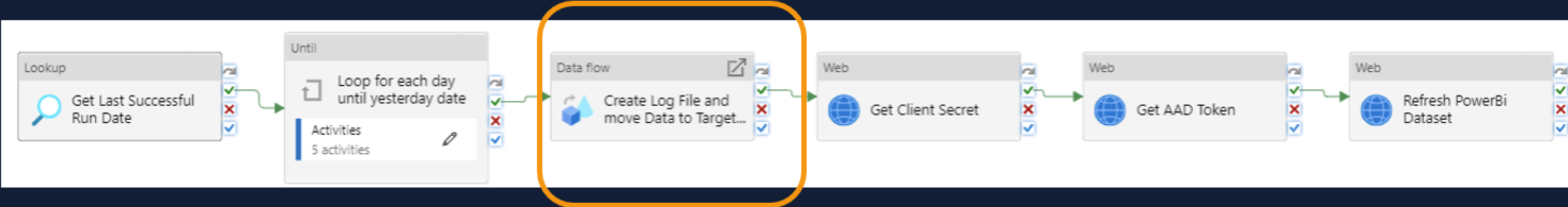
Status code: 200

JSON

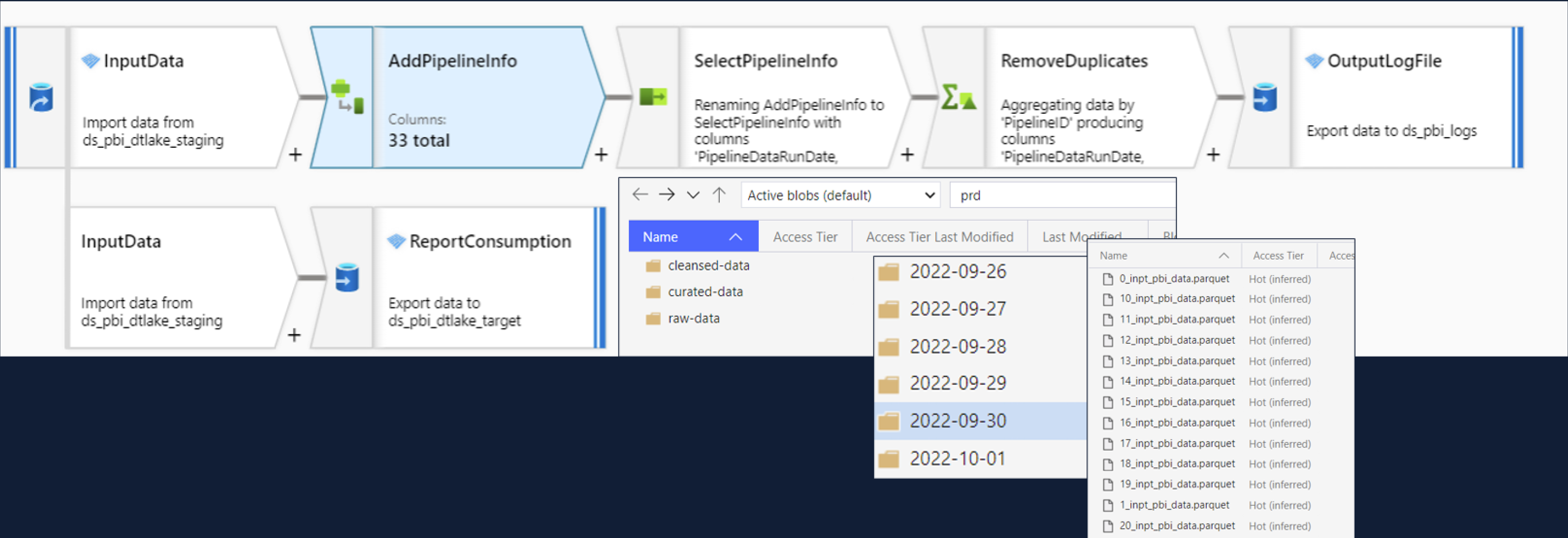
```
{
  "activityEventEntities": [
    {
      "Id": "41ce06d1-d81b-4ea0-bc6d-2ce3dd2f8e87",
      "CreationTime": "2019-08-13T07:55:15",
      "Operation": "ViewReport",
      "OrganizationId": "e43e3248-3d83-44aa-a94d-c836bd7f9b79",
      "UserKey": "123456",
      "Activity": "ViewReport",
      "Workload": "PowerBI",
      "UserId": "john@contoso.com",
      "ClientIP": "127.0.0.1"
    },
    {
      "Id": "c632aa64-70fc-4e80-88f3-9fc2cdcacce8",
      "CreationTime": "2019-08-13T07:55:10",
      "Operation": "ViewReport",
      "OrganizationId": "e43e3248-3d83-44aa-a94d-c836bd7f9b79",
      "UserKey": "42343KJK53K45J",
      "Activity": "ViewReport",
      "Workload": "PowerBI",
      "UserId": "john@contoso.com",
      "ClientIP": "131.107.160.240"
    }
  ],
  "continuationUri": "https://api.powerbi.com/v1.0/myorg/admin/activityevents?continuationToken='%2BRI",
  "continuationToken": "%2BRIID%3A244SAK1HY7YQAAAAAAAAA%3D%3D%23RT%3A1%23TRC%3A5%23FPC%3AARAAAAAAAAAAAF"
}
```



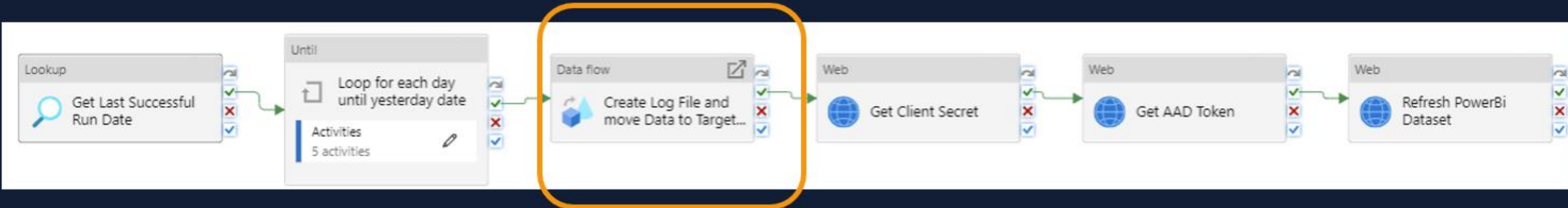
Architecture – Deep Dive



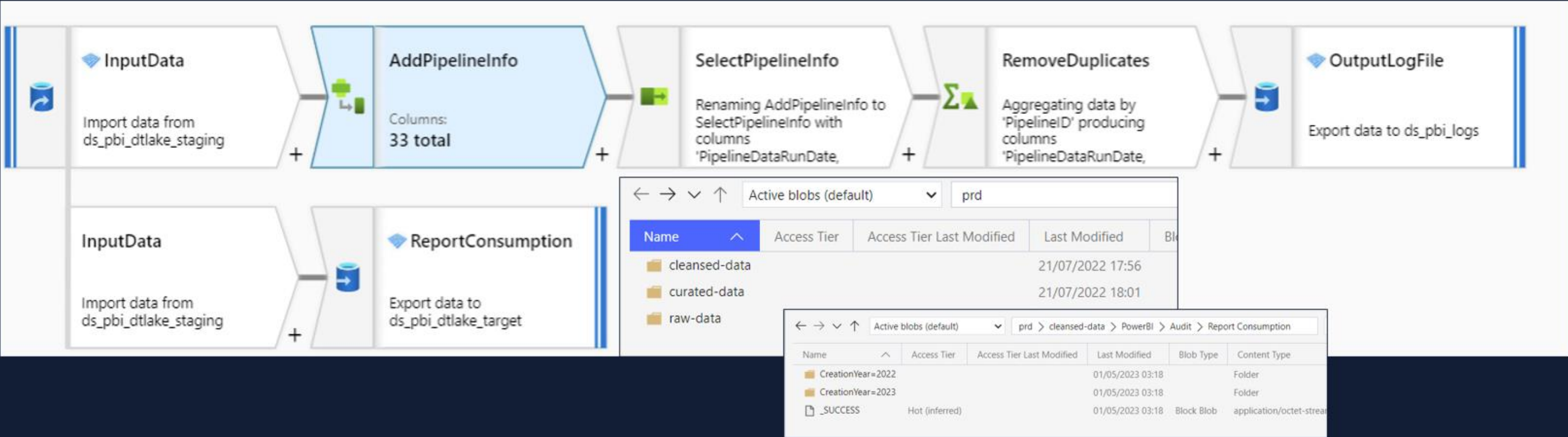
Data Transformation using Dataflow



Architecture – Deep Dive

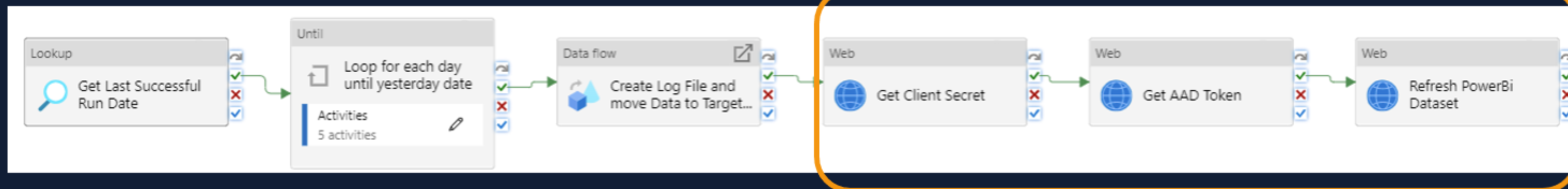


Data Transformation using Dataflow



Architecture – Deep Dive

Trigger Refresh of the Power BI Dataset using the Power BI Rest Api



Leverage the functionality of SQL Serverless Pools in Synapse to query the data



Construct Serverless Views in order not to burden the productive system



Feed the data to Power BI

Architecture – Deep Dive



Analytics pools

SQL pools

Apache Spark pools

Data Explorer pools (preview)

Activities

SQL requests

KQL requests

Apache Spark applications

Data flow debug

Integration

Pipeline runs

Trigger runs

Integration runtimes

Link connections

Pipeline runs

Triggered Debug

Rerun

Cancel options

Refresh

Edit columns

ListGantt

Filter by run ID or name

Local time : Last 30 days

Pipeline name : All

Status : All

Runs : Latest runs

Copy filters

Export to CSV

Showing 1 - 2 items

Refreshing...

<input type="checkbox"/> Pipeline name ↑↓	Run start ↑↓	Run end ↑↓	Duration	Triggered by	Status ↑↓
<input type="checkbox"/> pl_extract_pbi_activity_events	5/1/2023, 1:00:01 AM	5/1/2023, 3:18:53 AM	02:18:52	trigger_every_15_days	✔ Succeeded
<input type="checkbox"/> pl_extract_pbi_activity_events	4/16/2023, 1:00:01 AM	4/16/2023, 3:21:22 AM	02:21:20	trigger_every_15_days	✔ Succeeded

#GlobalAzureAthens

Resources Overview



#GlobalAzure

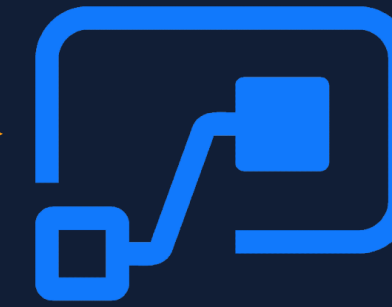
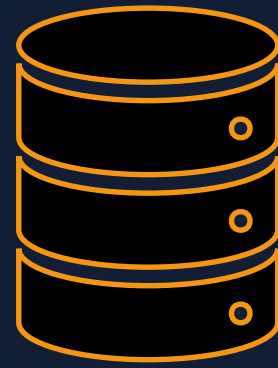
#GlobalAzureAthens

Further Enhancements



#GlobalAzure

Enhancement 1



Power Automate

Power Automate, once each month sends out an aggregated excel file for the underutilized areas



Please find attached the underutilization report for data from date 2022-06-01 until date 2022-10-01.

Rules

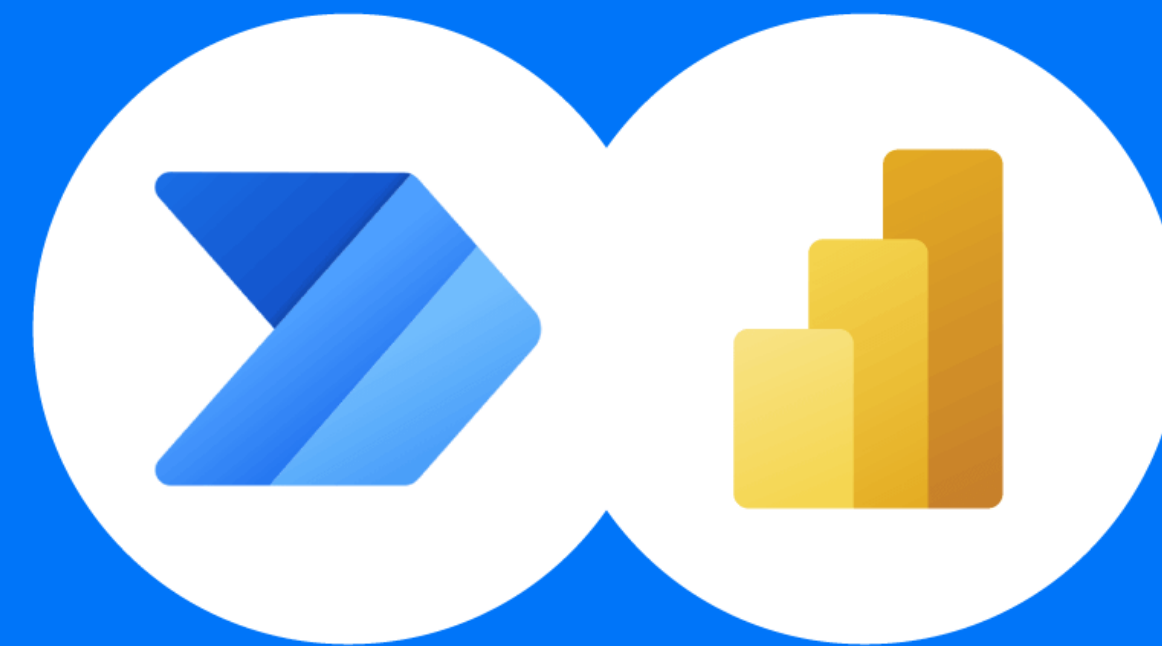
The report does not include Personal Workspaces and takes into account only the Workspaces that have distinct number of viewers equal or lower than 5.


For more information please refer to [PowerBI Usage Monitoring Report](#) .

Enhancement 2

- *Include idle Reports and Workspaces in the Data Collection pipeline*
- *Leverage Power Automate visual in Power BI, to send a notification to idle Reports/Workspaces owners about potential deletion*

Power Automate Visual in Power BI





Thank You!!
Q/A



Please evaluate !



A big **thank you** to our sponsors!



Microsoft

Info Quest
TECHNOLOGIES



CUBE



BlueStream
SOLUTIONS



Code.Hub

SIGNAL™

<https://bit.ly/GA23Evaluation>

#GlobalAzureAthens